

INSTRUCTIONS FOR BEGINNERS

For beginners, please comply with following steps to start:

1. Check if any missing parts of the accessories.
2. Prepare a cross screwdriver by hand.
3. Study the remote control boat before operation.
4. Insert the batteries into the RC boat and charge them up to full.
5. Insert the batteries into the remote controller.
6. Play in a safe environment.
7. Pair the remote control boat with the remote controller.
8. Be familiar with the remote control.
9. Oil the boat once every 10 times of use.
10. Please do not operate the boat with remote control when it is still on the ground in case of damage.

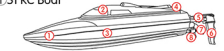
S-Series High Speed Remote Control Boat 2.4G RC HIGH SPEED RACING BOAT

*Please read this manual carefully before operation and keep it properly for future reference.

KNOW YOUR REMOTE CONTROL BOAT

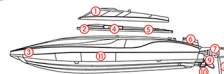
S-Series high speed remote control racing boat applies 2.4G remote control system to enable multiple players compete without interference. It is easy to operate via remote control to control functions such as high speed cruise, forward, backward, 180 degrees flipping, rudder fine-tuning, position reset etc., creating an thrilled and exciting experience.

1.S1 RC Boat



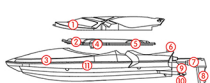
- ① Hull
- ② Hatch
- ③ Darin Hole
- ④ Hatch Switch
- ⑤ Hatch Switch
- ⑥ Hatch Switch
- ⑦ Servo Pull Rod
- ⑧ Steering Rudder
- ⑨ Navigation Rudder
- ⑩ Propeller
- ⑪ Drain Hole

2.S2 RC Boat



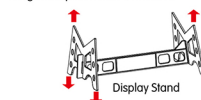
- ① Hatch
- ② Inner Hatch
- ③ Hull
- ④ Hatch Switch
- ⑤ Hatch Switch
- ⑥ Hatch Switch
- ⑦ Servo Pull Rod
- ⑧ Steering Rudder
- ⑨ Navigation Rudder
- ⑩ Propeller
- ⑪ Drain Hole

3.S3 RC Boat



- ① Hatch
- ② Inner Hatch
- ③ Hull
- ④ Hatch Switch
- ⑤ Hatch Switch
- ⑥ Hatch Switch
- ⑦ Servo Pull Rod
- ⑧ Steering Rudder
- ⑨ Navigation Rudder
- ⑩ Propeller
- ⑪ Drain Hole

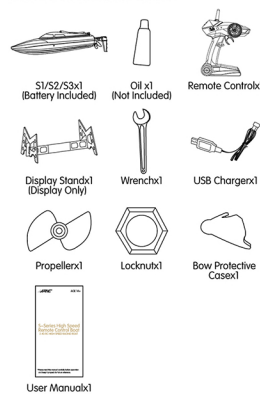
S1, S2 and S3 RC boat all include a display stand, which provides protection for the boat itself. S2 and S3 RC boat are featured with double-hatch design to improve water resistance.



The exclusive protective case protects the bow from rubs or collisions.



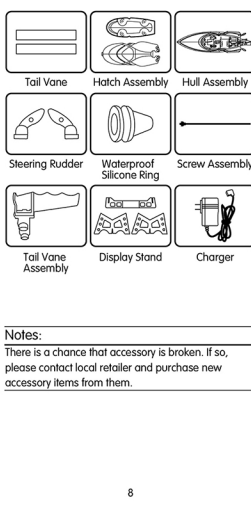
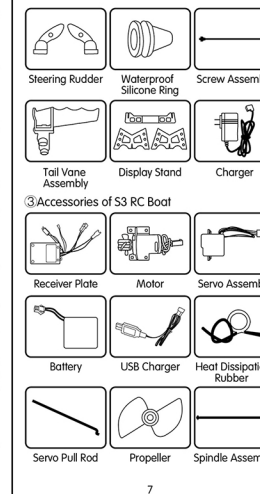
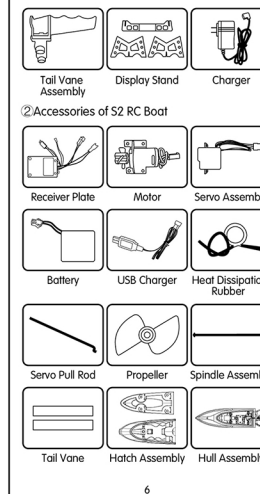
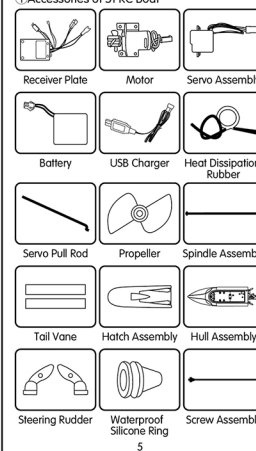
INCLUDED ACCESSORIES



Notes:
Please check the number of accessories carefully (as shown above). Please provide proof of purchase and contact the store for replacement if any missing parts.

OPTIONAL ACCESSORIES

1. Accessories of S1 RC Boat



Battery Charging and Assembly for RC Boat

1. Battery Charging for RC Boat

Option One: Charge via charger (not included) connected to a wall socket (110V~240V).

A. Plug the charger into the wall socket. B. Connect battery with the charger.

Notes:
The charger's light turns red when it starts charging and turns green when the charging completes.

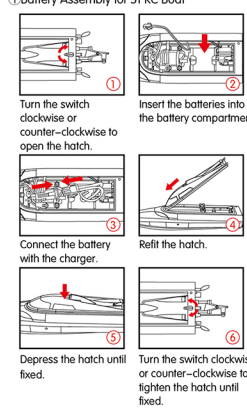
Option Two: Charging via USB cable

A. Plug the USB charging cable into the computer socket at one end. B. Connect the USB charging cable with the battery at the other end.

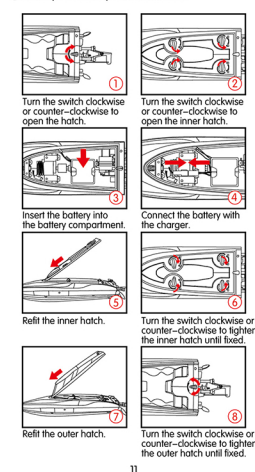
Notes:
The USB's light turns red when it starts charging and turns off when the charging completes.

2. Battery Assembly for RC Boat

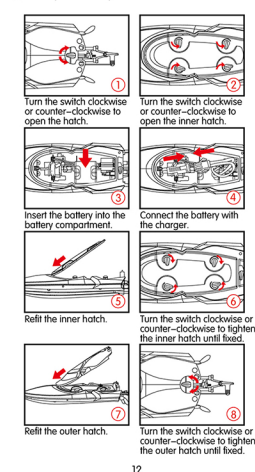
1. Battery Assembly for S1 RC Boat



2. Battery Assembly for S2 RC Boat

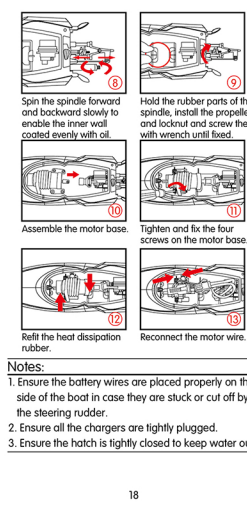
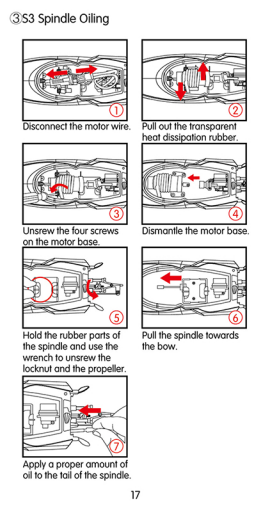
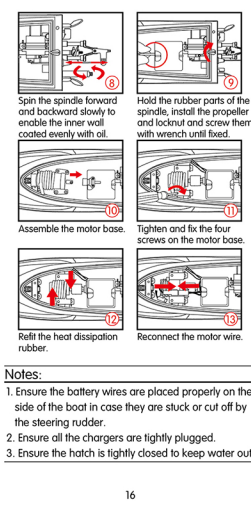
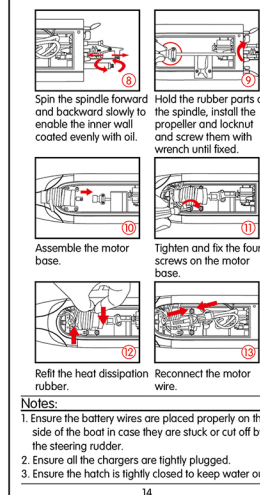
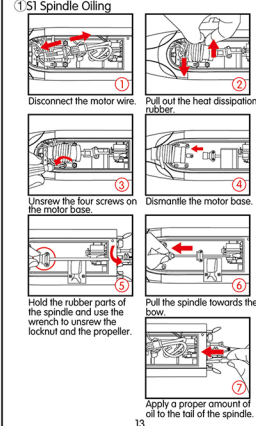


3. Battery Assembly for S3 RC Boat



3. Spindle Oiling

Oil the spindle once every 10 times of use. Remove the propeller and comply with the following steps to oil the spindle:



▲Battery Instructions

- There is a certain risk when using lithium battery. It may cause fire, body injury or property loss. Users must be aware of the risks and take full responsibility of using battery improperly.
- If battery leakage occurs, please avoid contacting your eyes or skin with electrolyte. Once it happens, please wash your eyes with clean water and seek medical care immediately.
- Please remove the plug immediately if you sense any peculiar smell, noise or smog.

Battery Charging

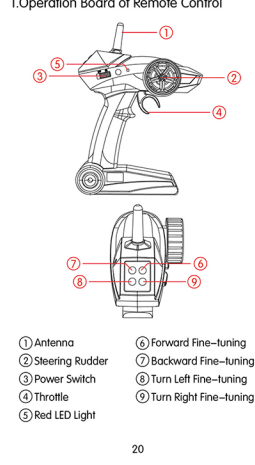
- Please use the charger from original factory to ensure your safe usage.
- Do not charge dilutant or outworn battery.
- Do not over charge battery. Please unplug the charger once fully charged.
- Do not charge the battery next to inflammables, such as carpet, timber floor or wood furniture or on the surface of electro-conductive objects. Please always keep an eye on the battery when charging.
- Do not charge battery which not cool down yet.
- The charging temperature should be between 0°C to 40°C.

Battery Recycling

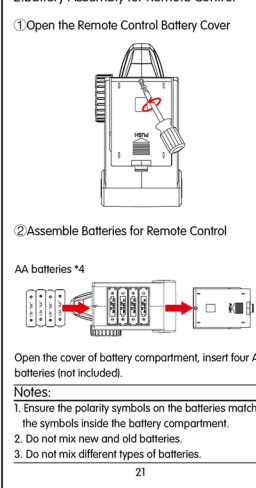
- Do not dispose the battery as daily rubbish. Please familiarize yourself with the local garbage disposal method and dispose it according to the special requirement.

KNOW YOUR REMOTE CONTROL

1. Operation Board of Remote Control



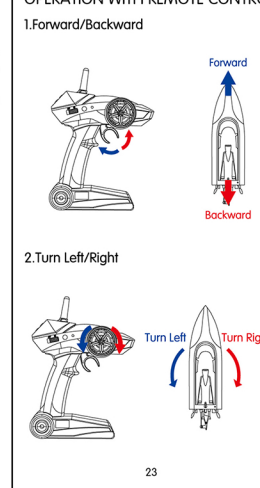
2. Battery Assembly for Remote Control



3. Pairing Remote Control with RC Boat

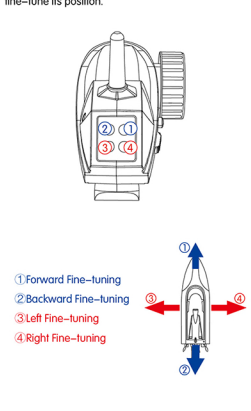
Power on the remote control. When the indicator light on the remote control turns up and flashes with a clear sound of beep, put the RC boat in the water and wait until the indicator light turns solid with continuous sounds of beep, indicating the process of pairing between the remote control and the RC boat has been successful.

OPERATION WITH REMOTE CONTROL



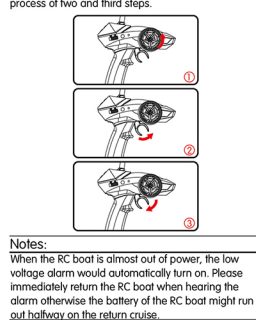
3. Fine-tuning

When the RC boat is shipping in the water, toggle the throttle joystick and press the fine-tuning buttons to fine-tune its position.



4. 180°Flips

Start this operation when the RC boat is shipping in the water. Firstly turn the steering rudder counter-clockwise (shown as figure 1), then toggle the throttle joystick forward for 2 to 3 seconds (shown as figure 2) and lastly toggle the Throttle joystick backward for 2 to 3 seconds (shown as figure 3). Repeat the two and the third steps (shown as figure 2 and 3) until the RC boat starts to flip. Ensure the steering rudder unchanged as figure 1 during the process of two and third steps.



▲IMPORTANT

- This product is not categorized as toys or playthings. It is applicable for users aged 14 and the above. For users under the age of 14, a parent or legal guardian shall company and supervise the child's use of this product at all times.
- Please do not attempt to operate the RC boat via remote control or break off the tail vane when it is still on the ground in case of damage. However, check if the RC boat has been powered on under ground mode.
- Please do not charge batteries, which are not cool down yet.
- Ensure no people in the water before shipping the RC boat otherwise it might cause potential accidents. Be aware if there are any plants, objects or obstacles in the water body, since they might be sucked or caught up in the rotating propellers and cause damages to the RC boat.
- Please operate the RC boat within a range 150 meters in distance in case of control loss.
- This product includes small and tiny components, which might cause suffocation if swallowed. Please do not swallow any included components.
- Please keep distance from the propellers particularly when they are rotating at high speed to avoid injury.
- Please do not touch the motor in operation or soon after it stops to avoid severe burns.
- According to electromagnetic environment requirements for aviation radio (station), this product is strictly prohibited by the airport runway as the center of a circle with radius of 5,000 meters.
- Please do not use this product where and when the radio communication is regulated by the Authority.
- Please inspect the USB cable and other components regularly. If any damages are found, please stop using and restore or replace with a new one.

MAINTENANCE

1. Please remove the batteries when the RC boat is not in use.
2. Direct keep the RC boat in cool place and avoid direct sunlight in case of paint chipping. Clean the surface with a piece of soft dry cloth each time after use.
3. Remove the remote control batteries if the RC boat will not be used for a certain period of time in case of battery leakage.

JRRC TECHNICAL SUPPORT

Dear Customer,

Thank you for choosing JRRC product. Please visit JRRC official website for more FAQ and information if there is any problem of using our product.

—Product Operation: Please visit JRRC College for tutorial video or user manual.
—Product Features: Please refer to product page description or product brochure.
—After-sale Service: Please refer to conditions and terms of after-sale service.
The final interpretation right belongs to all JRRC.

Should you have any further questions, please visit JRRC Online Feedback and leave your message.

Thank you again for your support!

JIANJIAN TECHNOLOGY CO.,LTD.
www.jrcc.com